



NOTES

DECK 4
The Hangar Bay extends from Deck 4 down to Deck 6 and Shuttlecraft Maintenance is located on Deck 7.

Flight Control and the Landing Tractor Beam are located at the front of the Hangar Bay. Ladders lead down to the Hangar Deck / Flight Deck.

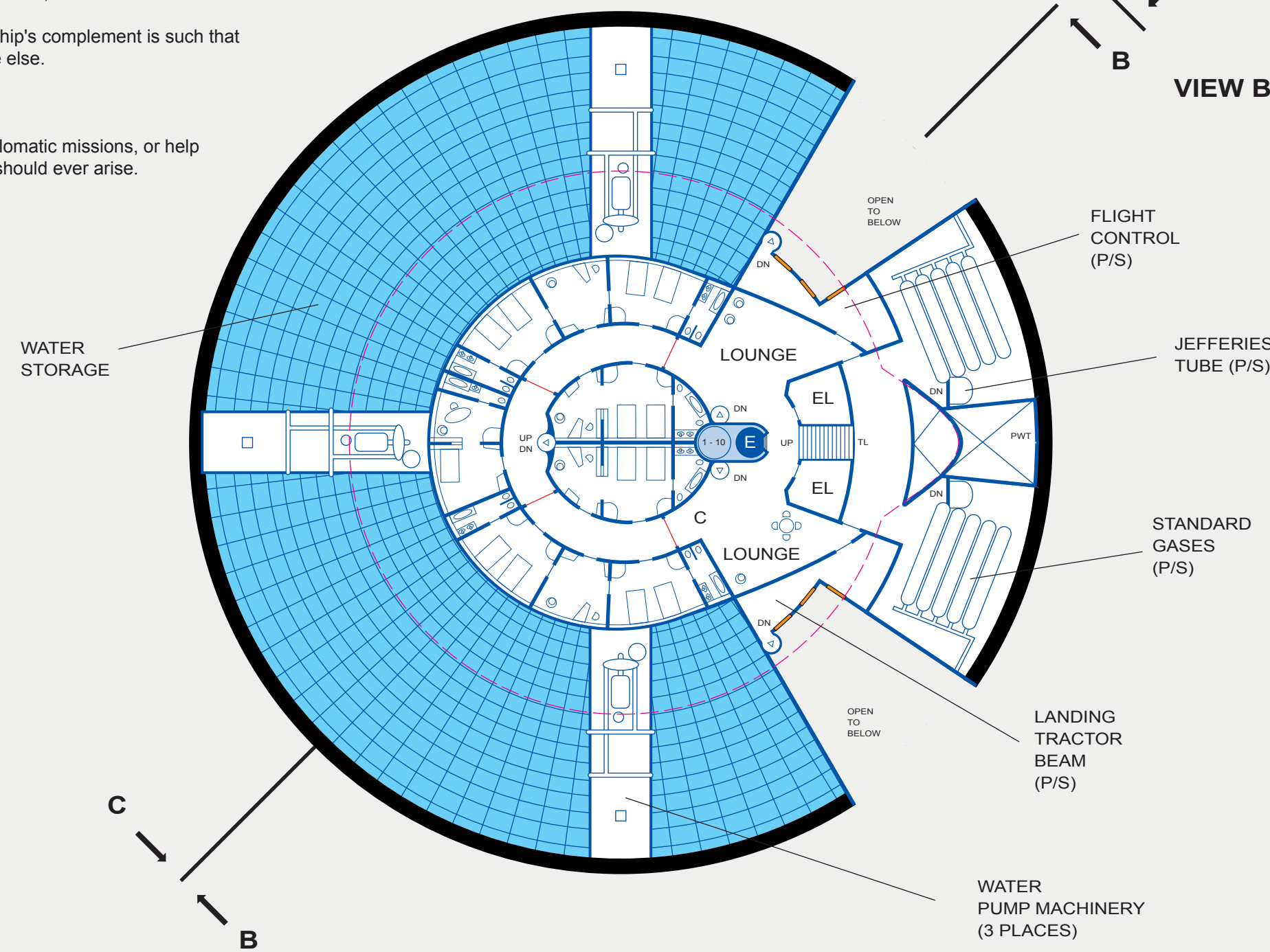
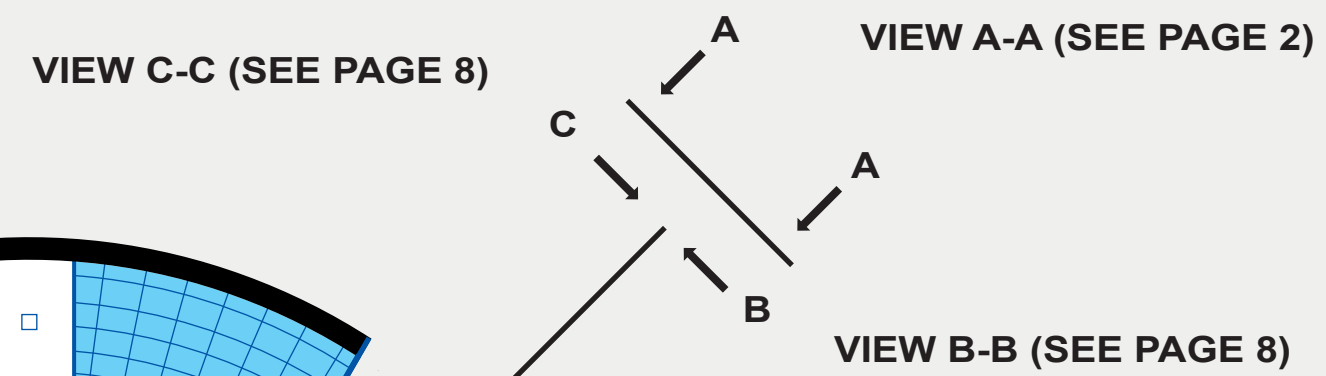
The Standard Gases located here store air while the Hangar Bay doors are open to vacuum. Jefferies Tubes from Engineering on Deck 6 reach up to this area.

Stairs for mass exodus via the hatch on Deck 2 start on this deck. On each side is a storage space (EL). These could contain full spacesuits, partial suits, air-testing kits, etc ... useful if exiting via the top hatch.

All the Crew's Quarters in the Primary Hull are laid out in rings. The rings are labeled from the center outwards, starting with A, then B, then C, and so on.

Junior Officers' quarters are on Deck 4. The ship's complement is such that they don't have to share quarters with anyone else.

The ship could help with rescue missions, diplomatic missions, or help evacuate / transport colonists if such a need should ever arise.



ACCOMMODATIONS

DECK 4 - Ring A - 4
Ring B - 9

DECK 5 - Ring A - 8
Ring B - 8
Ring C - 10

DECK 6 - Ring A - 8
Ring B - 12
Ring C - 20
Ring D - 28
Ring E - 32
Ring F - 38
Ring G - 38
Ring H - 32

TOTAL: 247

DECK 4: JUNIOR OFFICERS' QUARTERS

SHIP'S COMPLEMENT

OFFICERS 22
ENLISTED 198

TOTAL 220