



**NOTES**

**DECK 3**  
The Main Lounge (with a raised dance floor) is at the front.

Casinos are located aft of the Lounge.

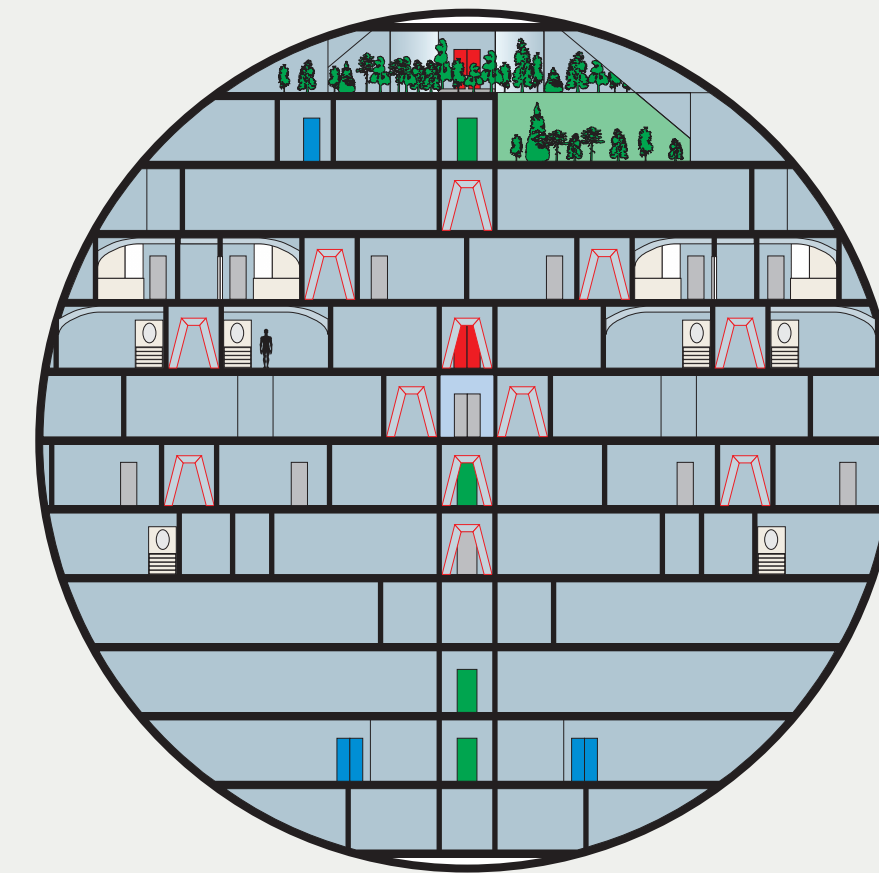
Space has been set aside immediately aft of the Casinos for sports, events and games. The space below the sloped floor of the Movie Theater is used as storage for the sports, events and games.

The space below the sloped floor of the Live Theater is used by the actors for costume changes, rehearsals, etc. and by stagehands for set construction, etc.

At the extreme rear of the deck is the Gym, a Crafts area, and a Library.

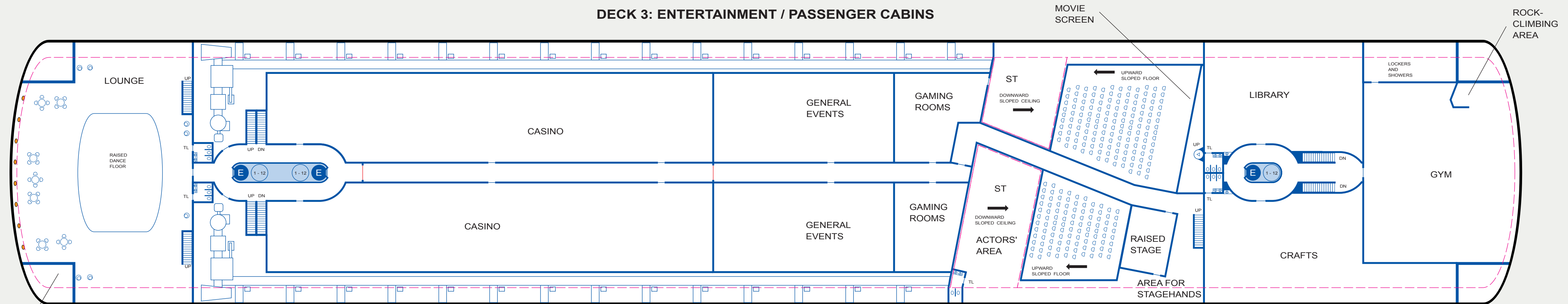
**DECK 4**  
There is Auxiliary Machinery at the front and along each side. Most of the rest of this deck is devoted to Passenger Cabins.

Batteries are located at the rear.



**CROSS-SECTION B-B**

**DECK 3: ENTERTAINMENT / PASSENGER CABINS**



REACTION CONTROL SYSTEM (8 PLACES)

**DECK 4: PASSENGER CABINS**

