



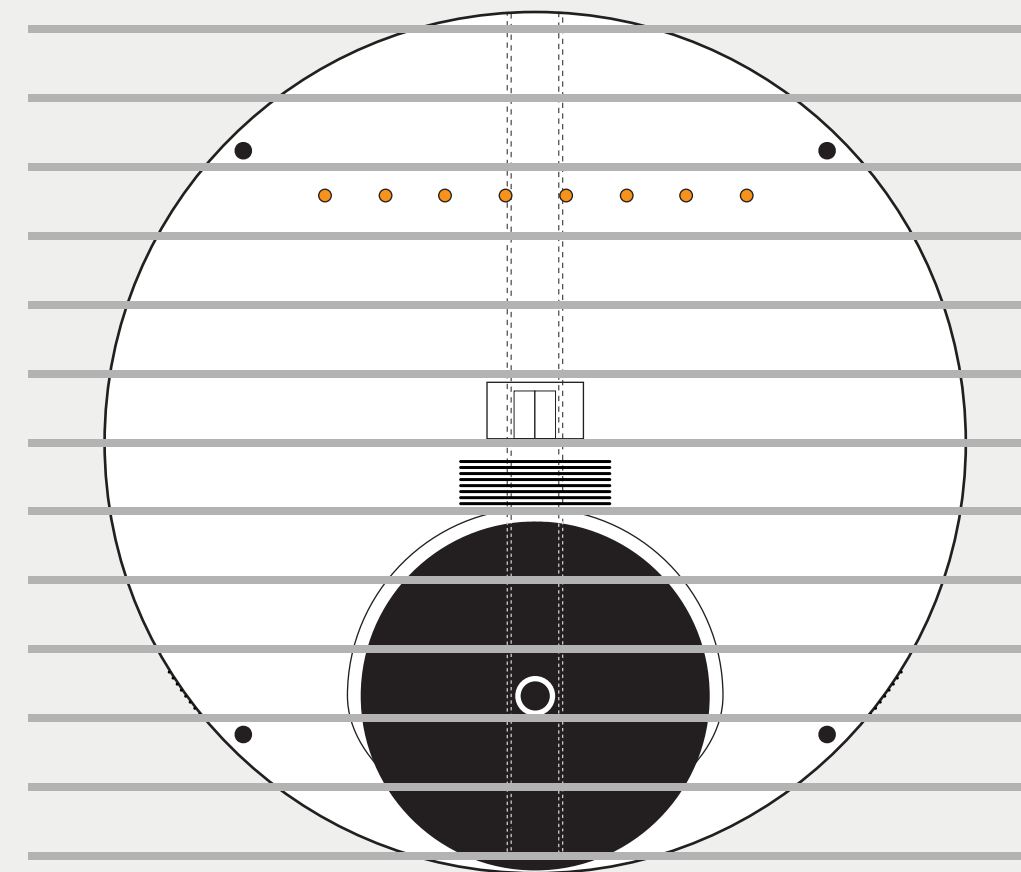
NOTES

Only the "Starliners" (Mk. IV containers) are outfitted with a Hangar Bay, a Main Sensor Dish, and sometimes windows.
The front magnetic latch was deleted and replaced with the main gangway.
The rear magnetic latch was deleted and replaced with the Impulse Engines.

The "Starliners" can be released in interstellar space or they can be released in a planetary system but without warp drive they are not able to travel from the one to the other. These ships are capable of independent operation, but only for a few months at a time.

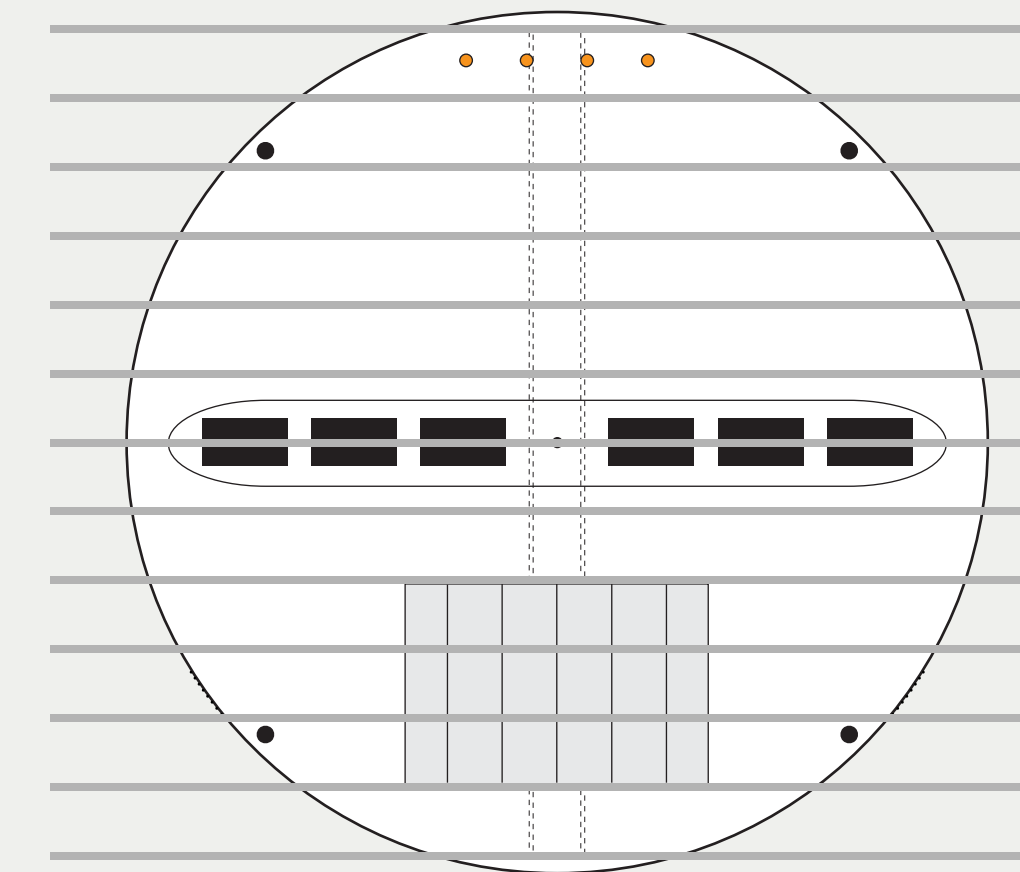
In an emergency, they can operate as a lifeboat for a maximum of 16 years. This is why "Starliners" do not have lifeboats; the best chance for survival is to stay with the ship.

They grey lines represent a consistent spacing of ceilings 9 feet (2.75 meters) high and decks 1.25 feet (0.38 meters) thick. The external hull is also 1.25 feet (0.38 meters) thick. The Piping / Wiring Trunk along the top of the hull is about 2 feet (0.6 meters) thick and the machinery-crawlspace along the bottom of the hull is also about 2 feet (0.6 meters) thick.

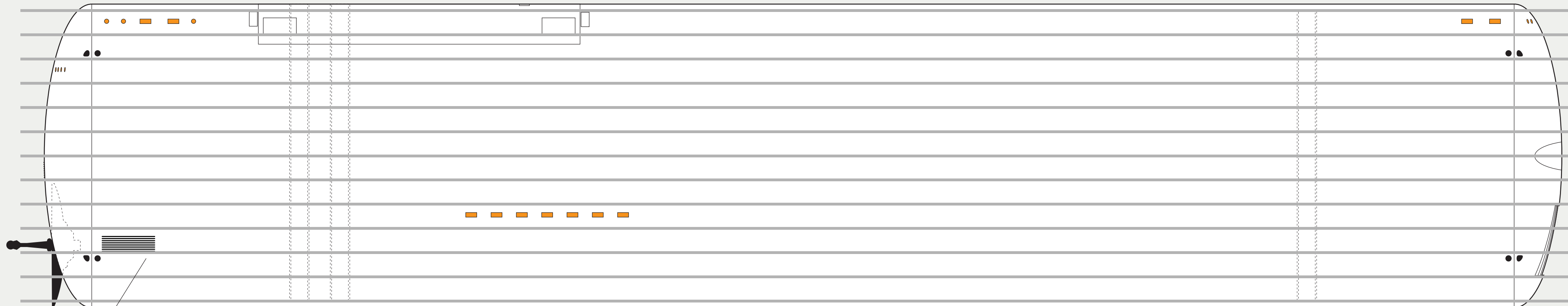


FRONT

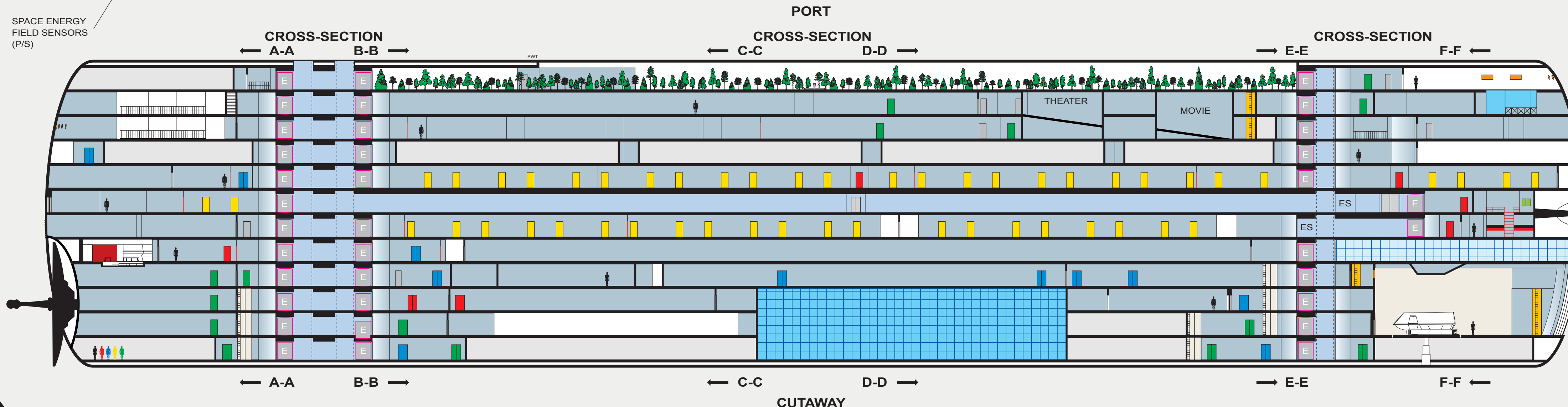
- 1
- 2
- 3
- 4
- 5
- 6
- 7
- 8
- 9
- 10
- 11
- 12



REAR



SPACE ENERGY FIELD SENSORS (P/S)



CUTAWAY