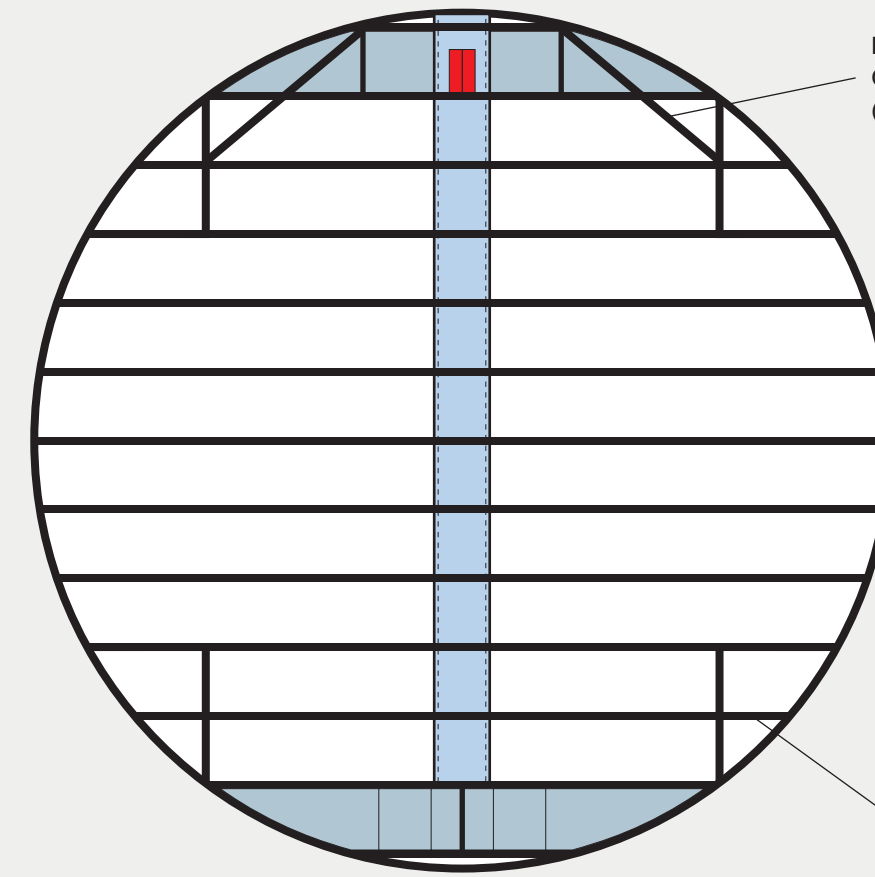


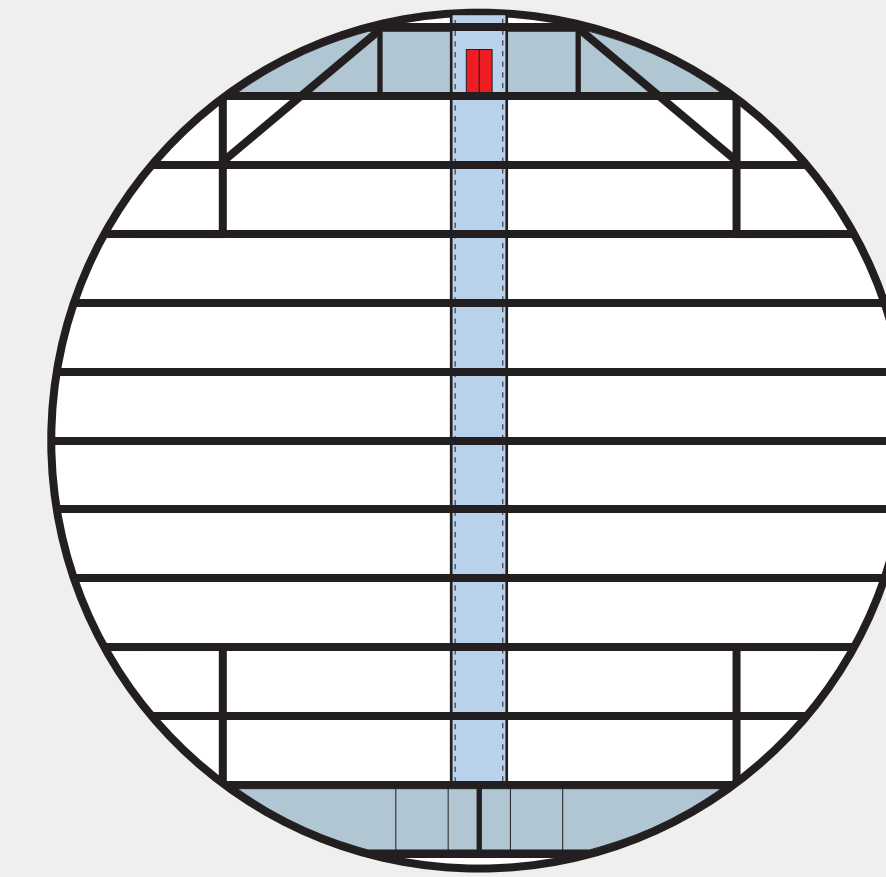
NOTES

The Mk. III is for transporting refrigerated goods. A single turbo-elevator shaft leads down from the monitoring station on the highest deck to the 4 (or 6) cargo transporters on the lowest deck. Stairs provide access to each level. Each level has partitions to allow for independent temperature control.

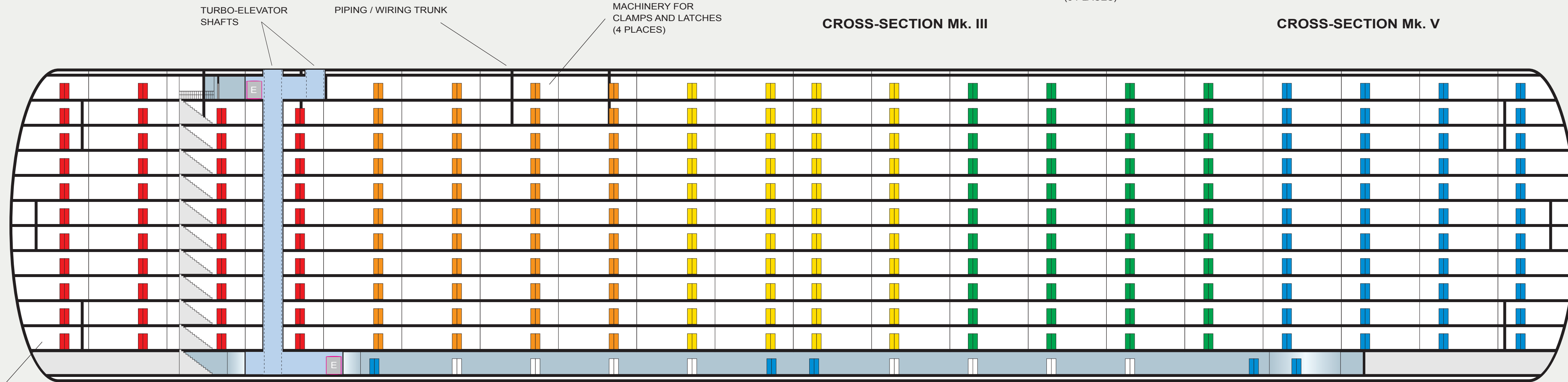
The Mk. V is for transporting general products. A single turbo-elevator shaft leads down from the monitoring station on the highest deck to the 4 (or 6) cargo transporters on the lowest deck. Stairs provide access to each level. Each level typically only has 2 access doors on each side.



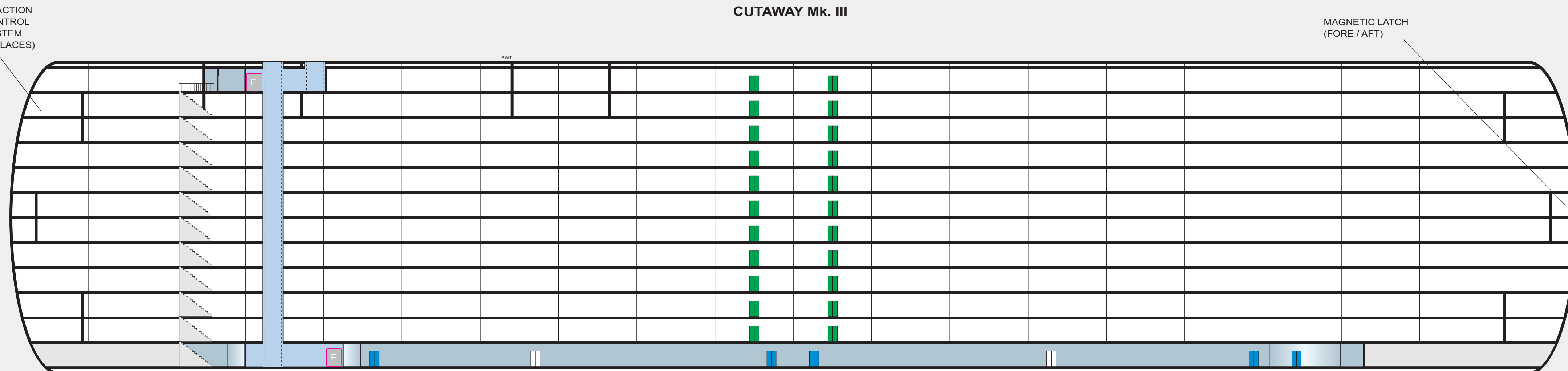
CROSS-SECTION Mk. III



CROSS-SECTION Mk. V



CUTAWAY Mk. III



CUTAWAY Mk. V