

NOTES

DECK 9
Sensors and Deflector Equipment are located at the front, immediately behind the Sensor Dish.

Batteries are located aft of the Sensors.

The two main Dining Rooms for passengers are located aft of the Batteries.

There is some Food Storage on the port side and the Food Preparation area is on the starboard side. The two turbo-elevators provide access to the food storage areas and the Hydroponics Farm on the lower levels.

The Mess Hall is for the crew.

There are two Observation Galleries providing a view of the Hangar Bay. Between the two Observation Galleries is Hangar Bay Flight Control.

The Tractor Beam for the Hangar Bay is at the extreme aft.

DECK 10
Sensors and Deflector Equipment are located at the front, immediately behind the Sensor Dish.

Cargo Holds are located aft of the Sensors.

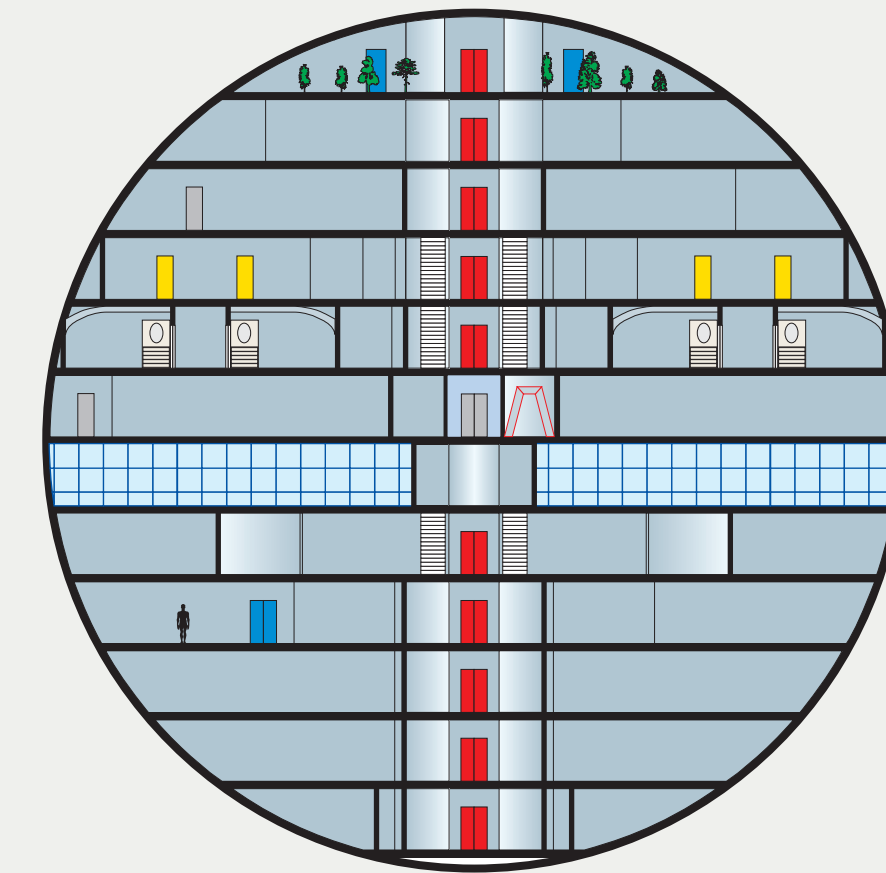
More Food Storage is located aft of the Cargo Holds.

The top of the Fresh Water Tank is aft of the Food Storage. Water Pumps and Water Pressure Systems are ahead of and behind the Fresh Water Tank.

Food requiring refrigeration is stored aft of the Fresh Water Tank.

The Air Conditioning Machinery and Atmosphere Control system is aft of the Cold Food Storage. Ventilation ducts reach forward along both sides of the Water Tank and the Food Storage.

The Hangar Bay continues from above at the extreme aft.



CROSS-SECTION E-E

