

NOTES

ENGINE INSPECTION STATION  
The Matter-Antimatter Reaction Chamber is located here. The entire level is heavily shielded.

DECK A DORSAL  
The disconnection equipment is located on this deck. This area is kept clear and is difficult to enter except by authorized personnel. It is accessible only by ladder.

DECK B DORSAL  
The disconnection equipment is located on this deck. This area is kept clear and is difficult to enter except by authorized personnel. It is accessible only by ladder.

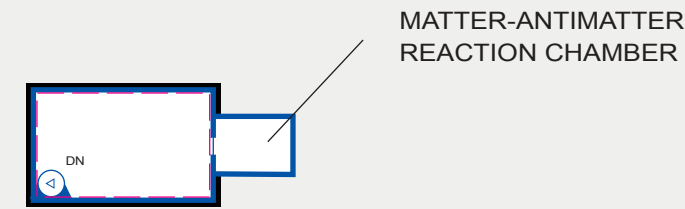
DECK C DORSAL  
Deflector Equipment is located on this deck.

DECK D DORSAL  
More Deflector Equipment is located on this deck.

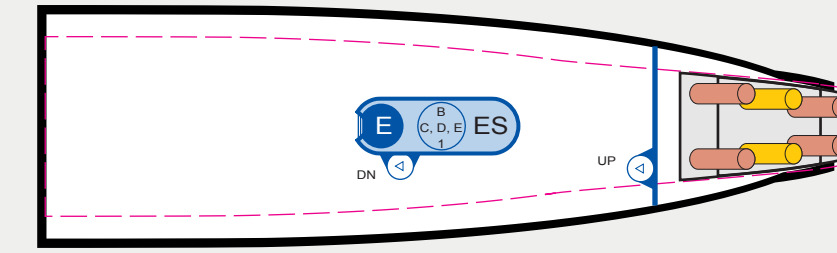
DECK E DORSAL  
More Deflector Equipment is located on this deck.

DECK F DORSAL  
More Deflector Equipment is located on this deck.

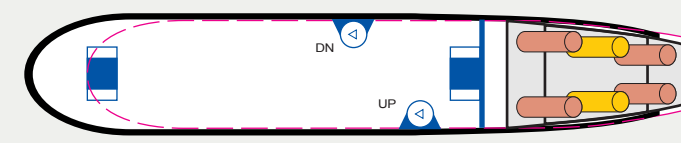
DECK G DORSAL  
More Deflector Equipment is located on this deck.



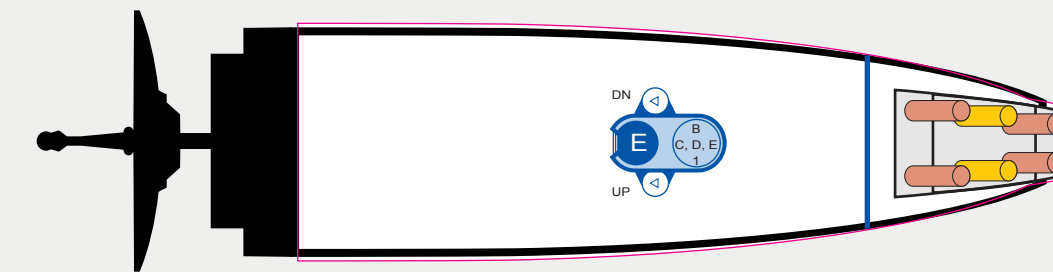
ENGINE INSPECTION STATION



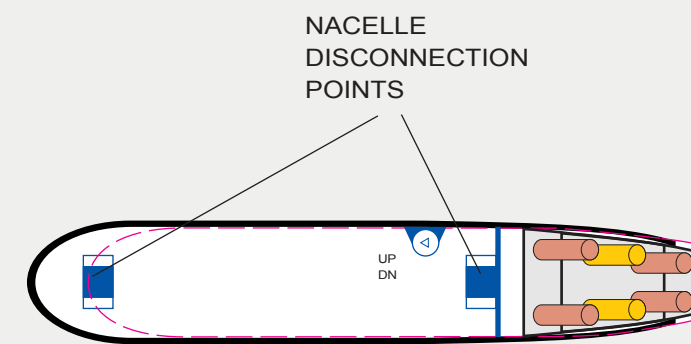
DECK D: DORSAL



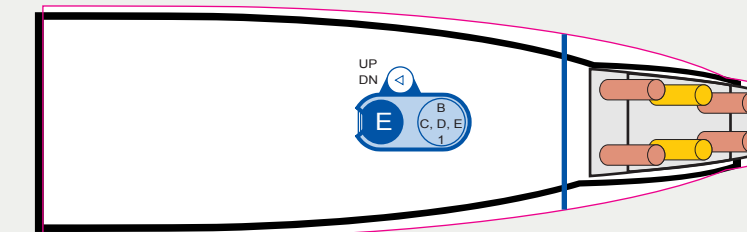
DECK A: DORSAL



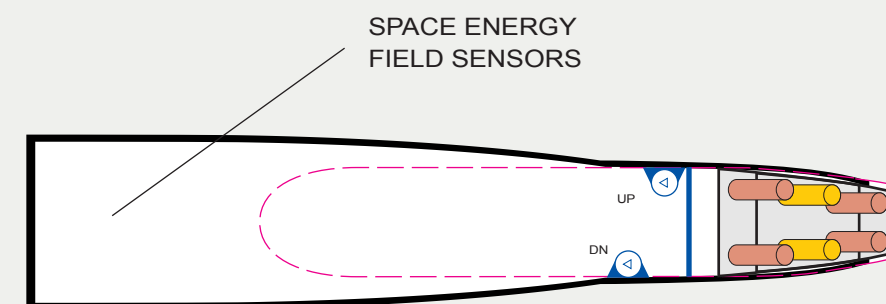
DECK E: DORSAL



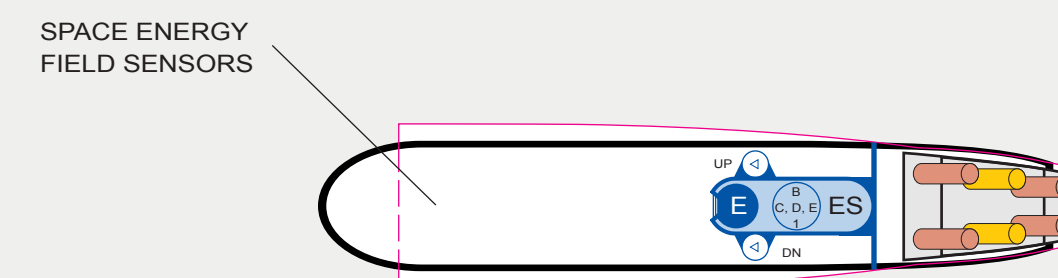
DECK B: DORSAL



DECK F: DORSAL



DECK C: DORSAL



DECK G: DORSAL