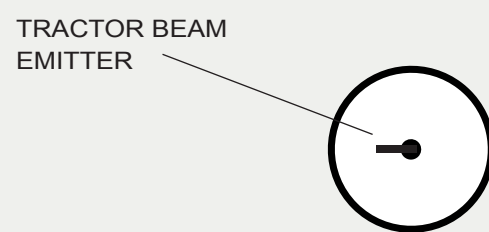
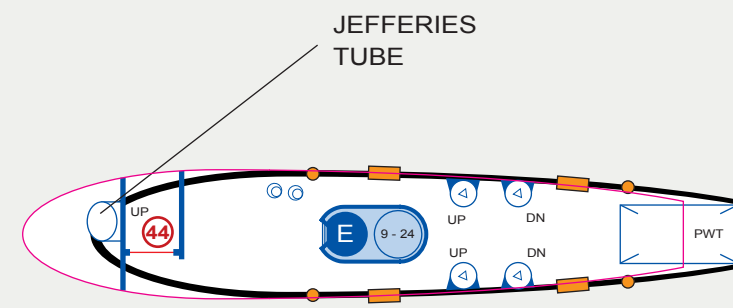


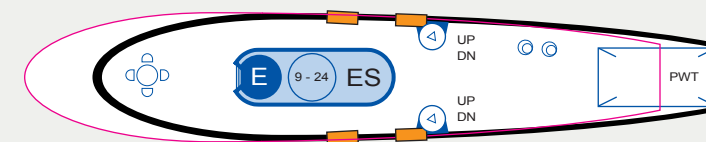
DECK 11: PHASER FIRE CONTROL



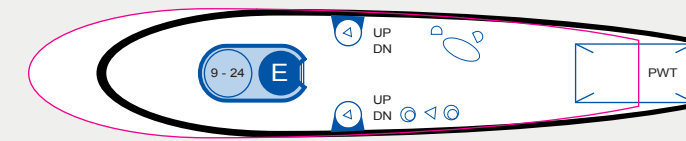
DECK 12: SENSORS / TRACTOR BEAM



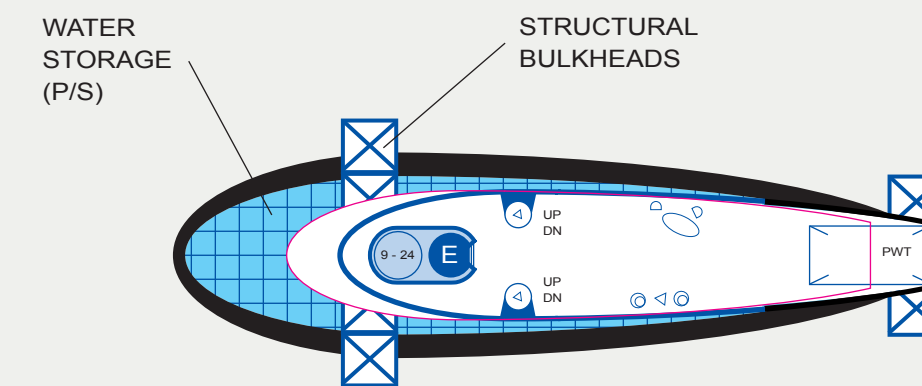
**DECK 11: DORSAL
DECK 3 (Secondary Hull)**



**DECK 12: DORSAL
DECK 4 (Secondary Hull)**



**DECK 13: DORSAL
DECK 5 (Secondary Hull)**



**DECK 14: DORSAL
DECK 6 (Secondary Hull)**

NOTES

DECK 11
TMoST states that Phaser Control is on Deck 11. The episode BALANCE OF TERROR shows this room. Set plans show that the door was offset to starboard. The room is offset to port because there is not much headroom on this deck. The door leads to the corridor which curves around to the ladder at the back.

The equipment around the perimeter is for the Tractor Beam. The 3 Tractor Beam Controllers direct the Emitter so that the beam can locate and lock onto the object being towed.

The 3 pale gold-coloured recessed rings on the underside of the Primary Hull absorb and re-direct any back-scatter created by the Tractor Beam.

DECK 11 DORSAL
This Jefferies Tube leads up to the Primary Hull disconnection equipment. A dead Tellarite was found here in the episode JOURNEY TO BABEL.

DECK 12
The Lower Sensor Dome is located here.

The Tractor Beam Emitter is at the bottom of the lower sensor dome.

DECK 12 DORSAL
This is a lounge.

DECK 13 DORSAL
This is a lounge.

DECK 14 DORSAL
This area is also a lounge, but the top of the Secondary Hull's water tank is also visible here.